



INSTITUTE for
POLICY RESEARCH

The Community Research Collaborative
of the **University of Cincinnati**
and **United Way of Greater Cincinnati**



City of Cincinnati

Part 1 Crimes, 1995 to 2003

Report Prepared by:

Mark A. Carrozza

UC & UWGC Community Research Collaborative

Institute for Policy Research

University of Cincinnati

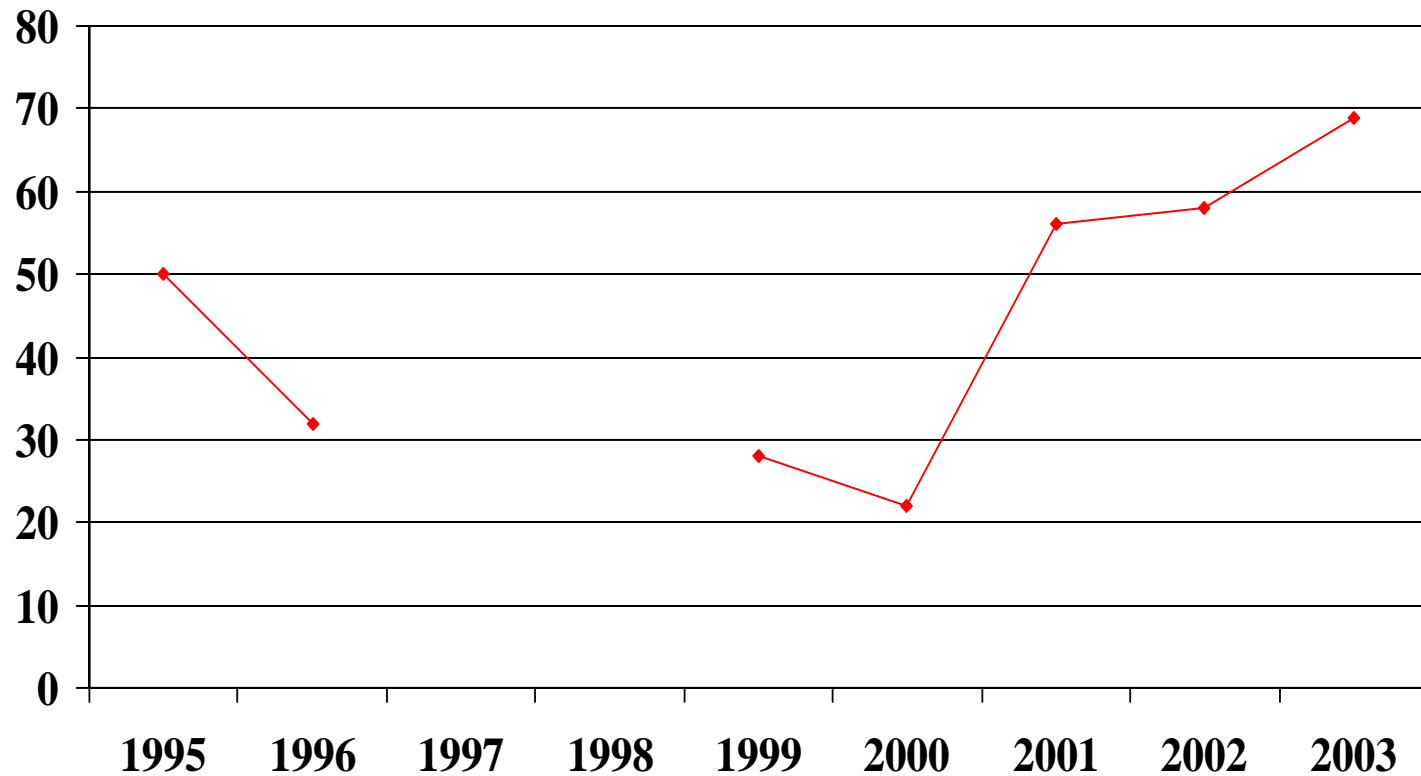


Part 1 Crimes

	1995	1996	1997	1998	1999	2000	2001	2002	2003
Murder and non-negligent manslaughter	50	32	na	na	28	22	56	58	69
Total rapes	408	315	na	na	249	284	323	390	340
Total robberies	2,155	1,774	na	na	1,209	1,404	2,095	2,413	2,172
Total aggravated assault	2,027	1,800	na	na	1,005	1,073	1,533	1,328	1,238
Total burglaries	5,366	5,687	na	na	4,382	4,960	6,241	6,491	5,936
Total larceny - theft	15,012	16,025	na	na	13,169	12,440	13,944	13,970	14,352
Total motor vehicle thefts	1,913	1,822	na	na	1,685	2,029	3,231	4,576	4,526
Grand total	26,931	27,455	na	na	21,727	22,212	27,423	29,226	28,633

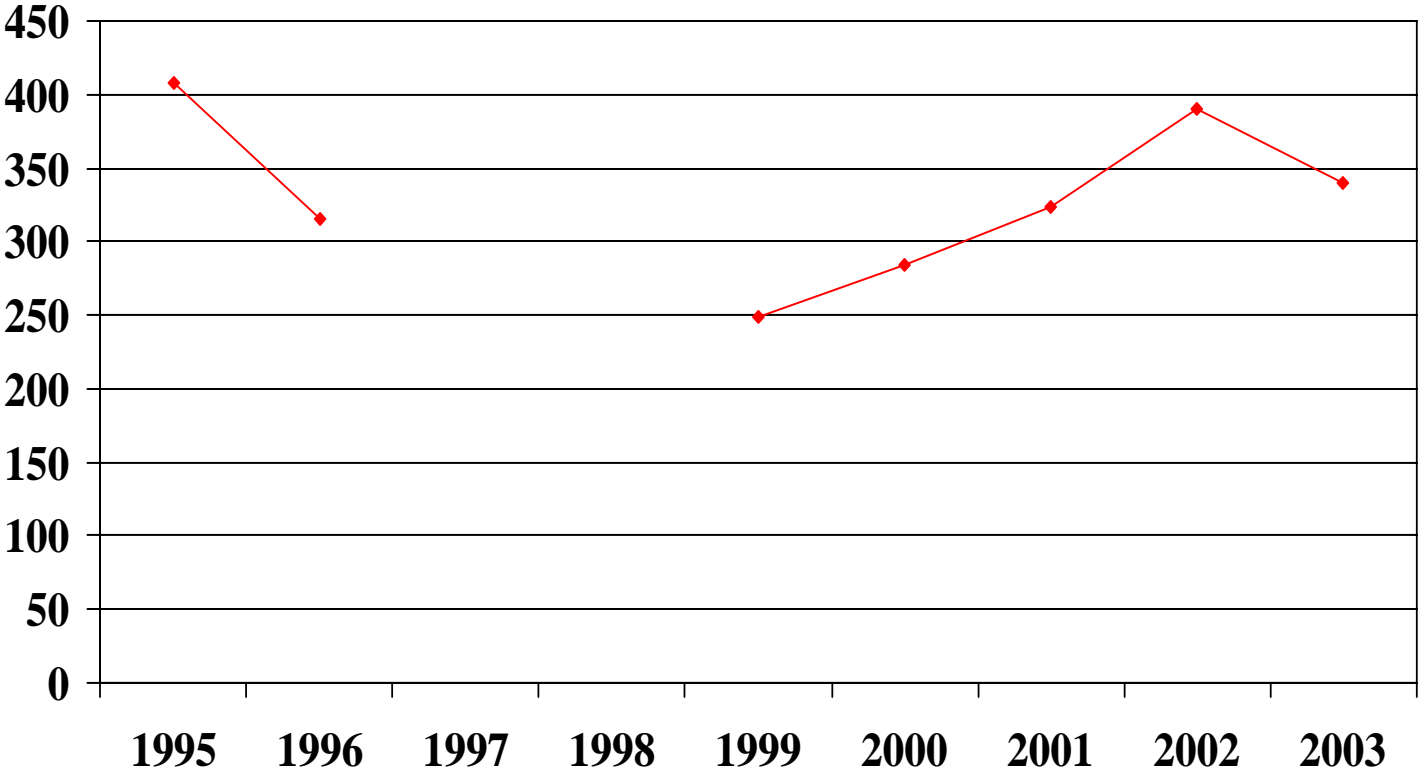
Sources: 1995 to 2001 -- U.S. Dept. of Justice, Federal Bureau of Investigation. UNIFORM CRIME REPORTING PROGRAM DATA [UNITED STATES]: OFFENSES KNOWN AND CLEARANCES BY ARREST, 2000 [Computer file]. Compiled by the U.S. Dept. of Justice, Federal Bureau of Investigation. ICPSR ed. Ann Arbor, MI: Inter-university Consortium for Political and Social Research [producer and distributor]. 2002 & 2003 – City of Cincinnati Police, Police Statistics. <http://www.cincinnati-oh.gov/police/pages/-4258-/>

Murder and Non-Negligent Manslaughter



The Community Research Collaborative
of the University of Cincinnati
and United Way of Greater Cincinnati

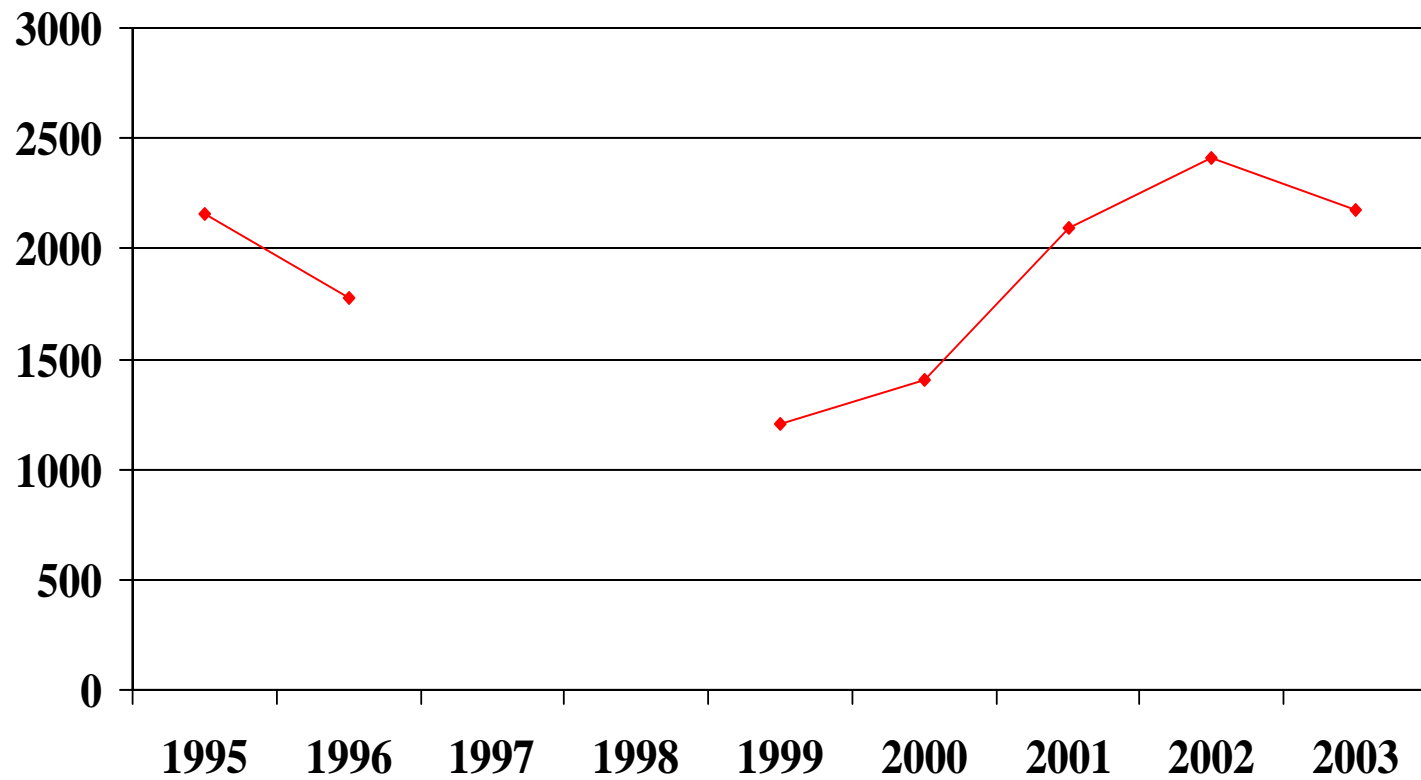
Total Rapes



The Community Research Collaborative
of the University of Cincinnati
and United Way of Greater Cincinnati



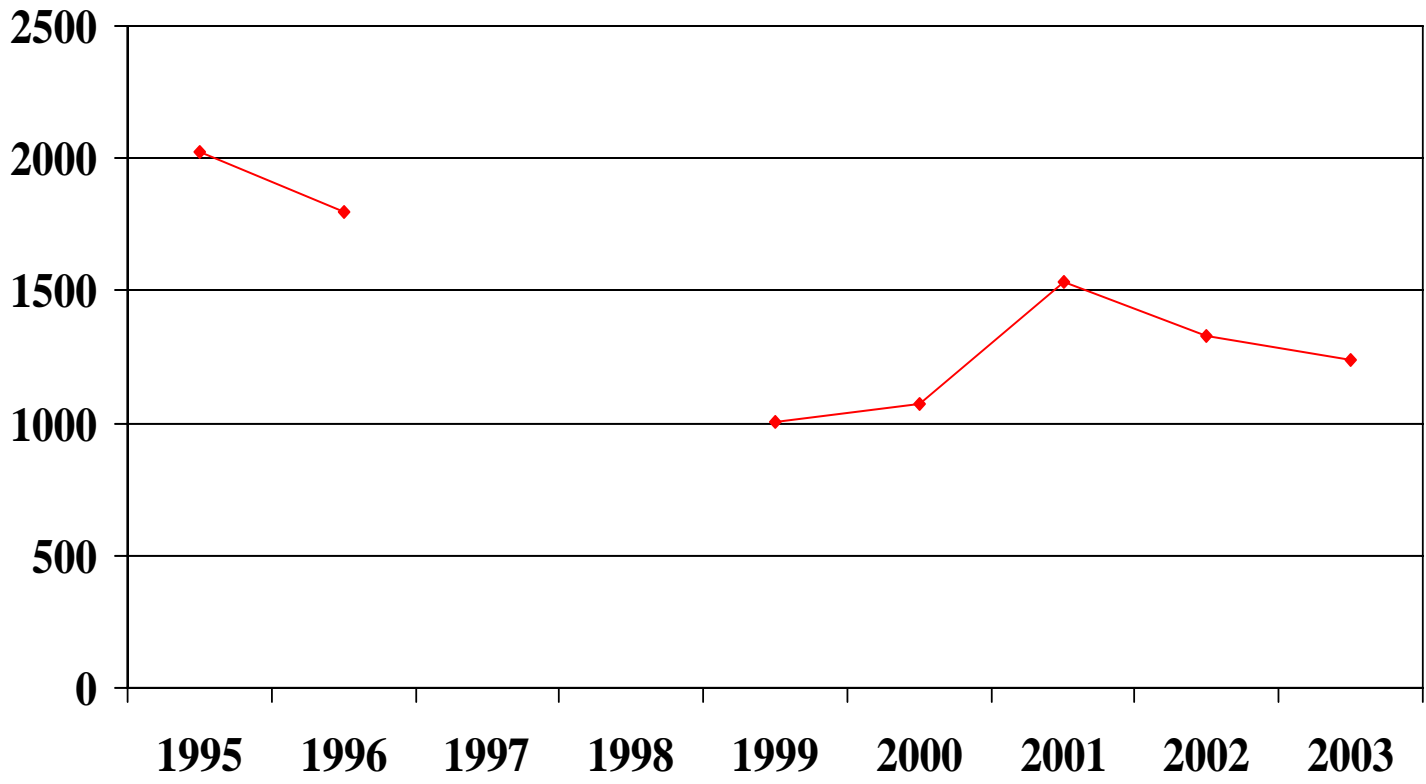
Total Robberies



The Community Research Collaborative
of the University of Cincinnati
and United Way of Greater Cincinnati

UNIVERSITY OF
UC
Cincinnati

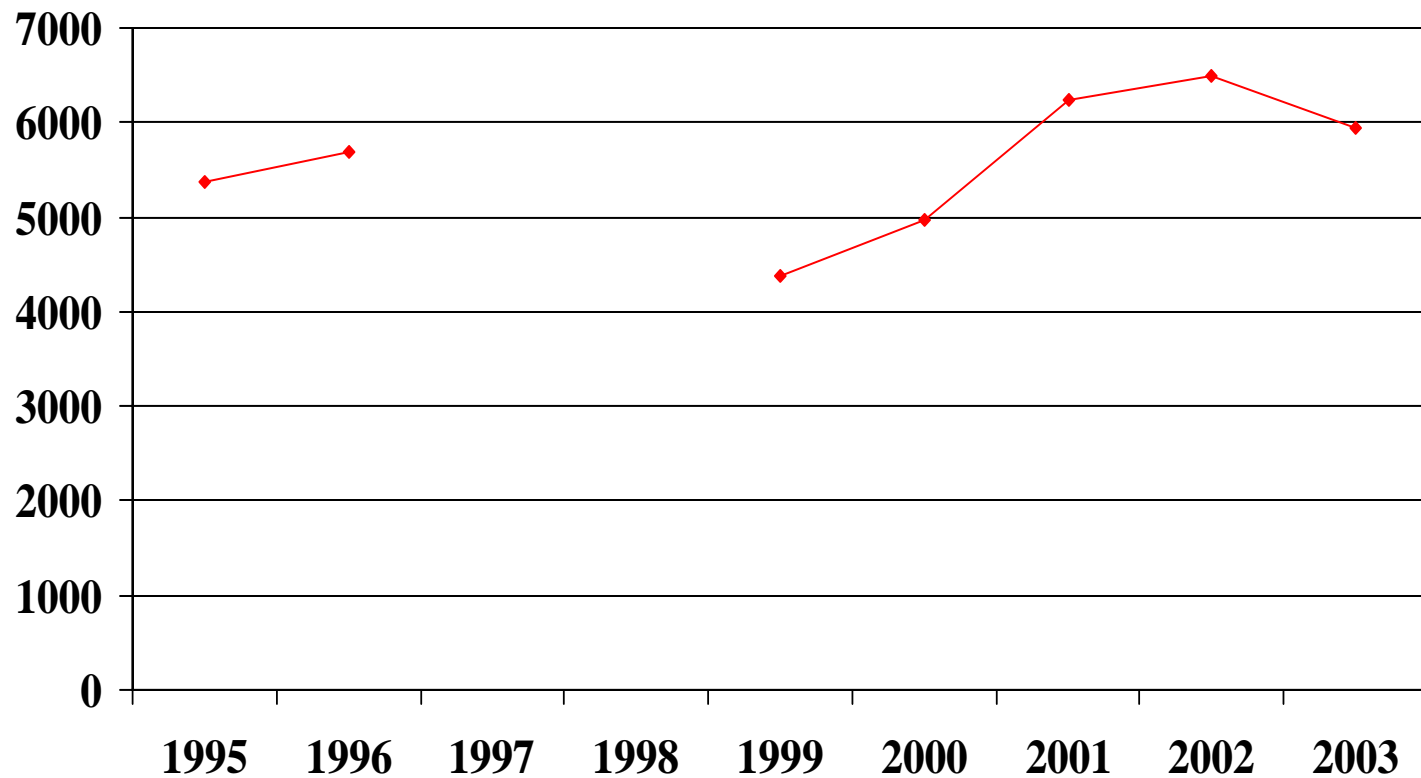
Total Agg. Assaults



The Community Research Collaborative
of the University of Cincinnati
and United Way of Greater Cincinnati

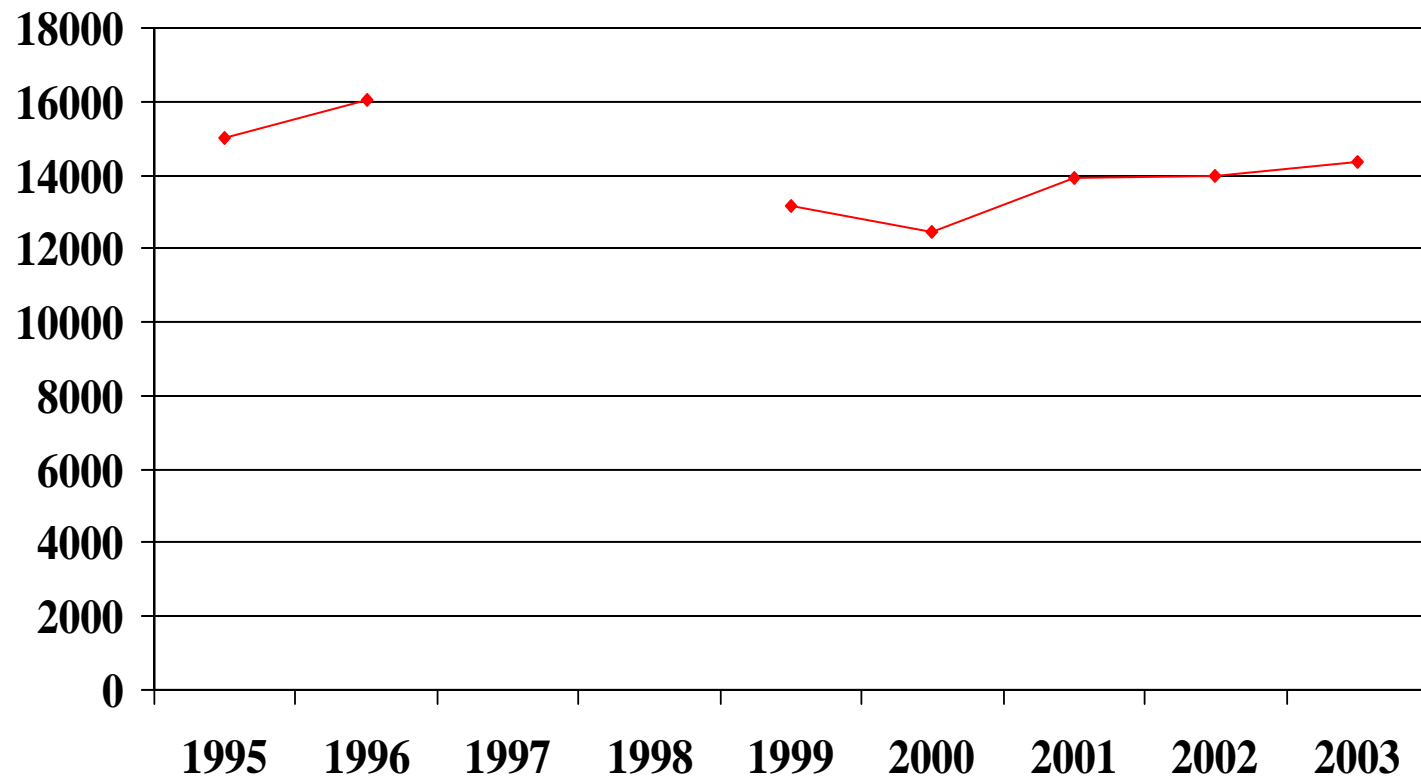


Total Burglaries



The Community Research Collaborative
of the University of Cincinnati
and United Way of Greater Cincinnati

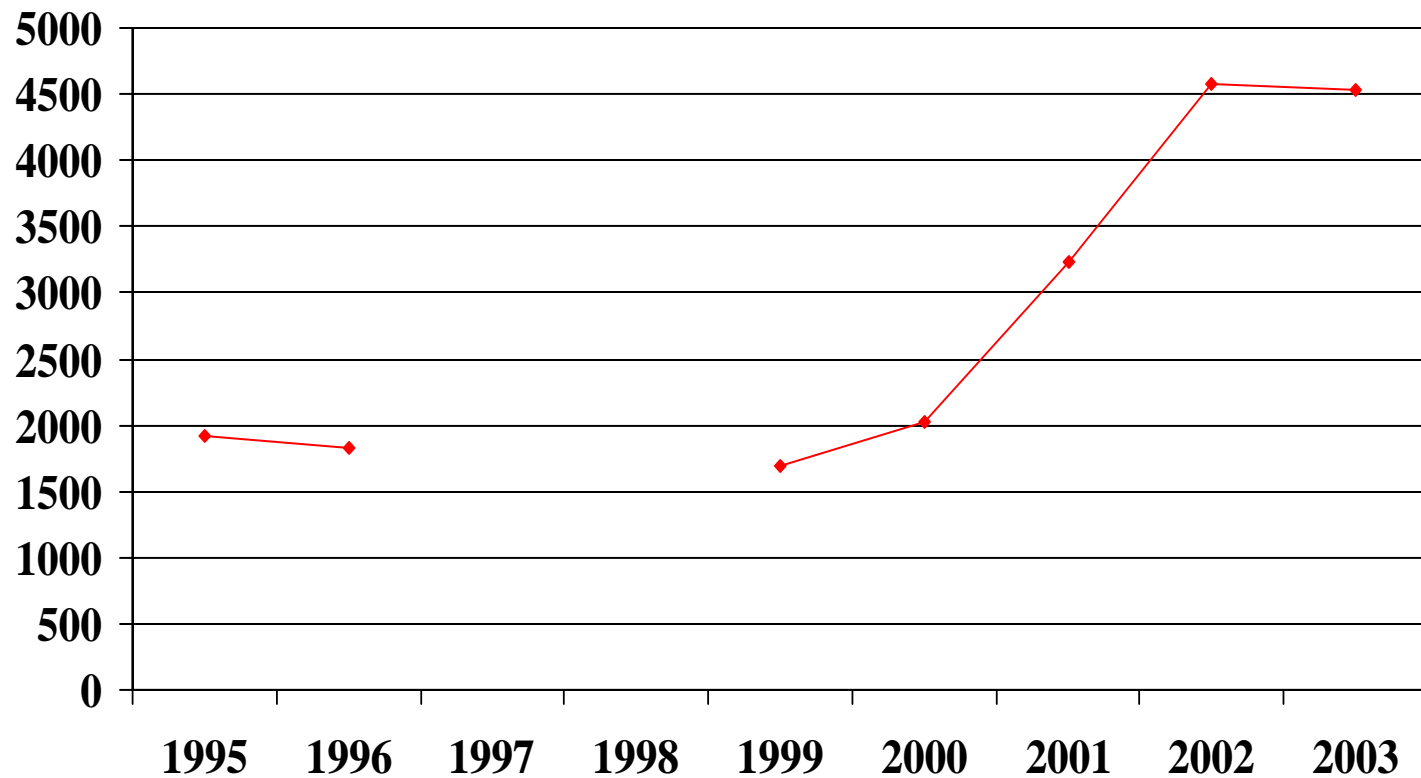
Total Larceny - Theft



The Community Research Collaborative
of the University of Cincinnati
and United Way of Greater Cincinnati

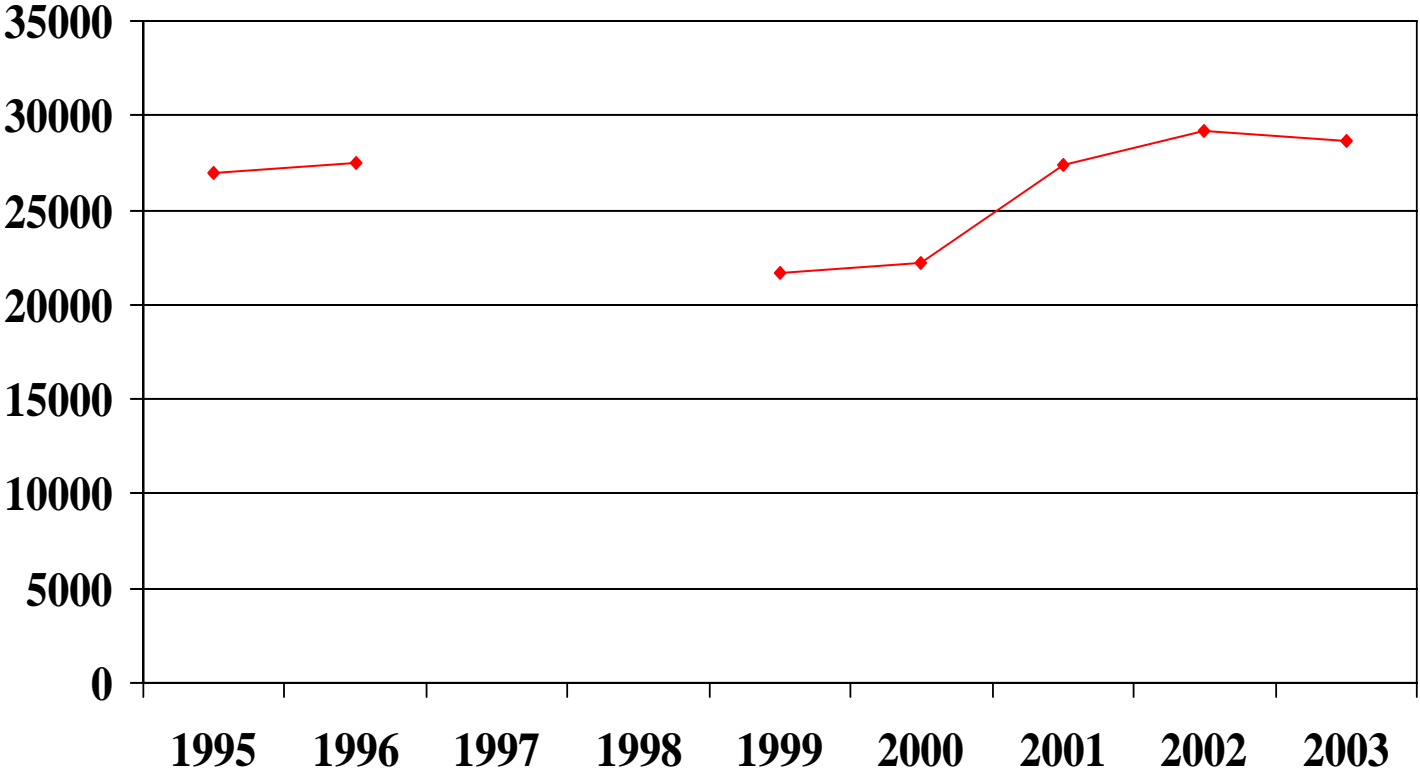
UNIVERSITY OF
UC
Cincinnati

Total Motor Vehicle Thefts



The Community Research Collaborative
of the University of Cincinnati
and United Way of Greater Cincinnati

Grand Total of All Offenses



The Community Research Collaborative
of the University of Cincinnati
and United Way of Greater Cincinnati

